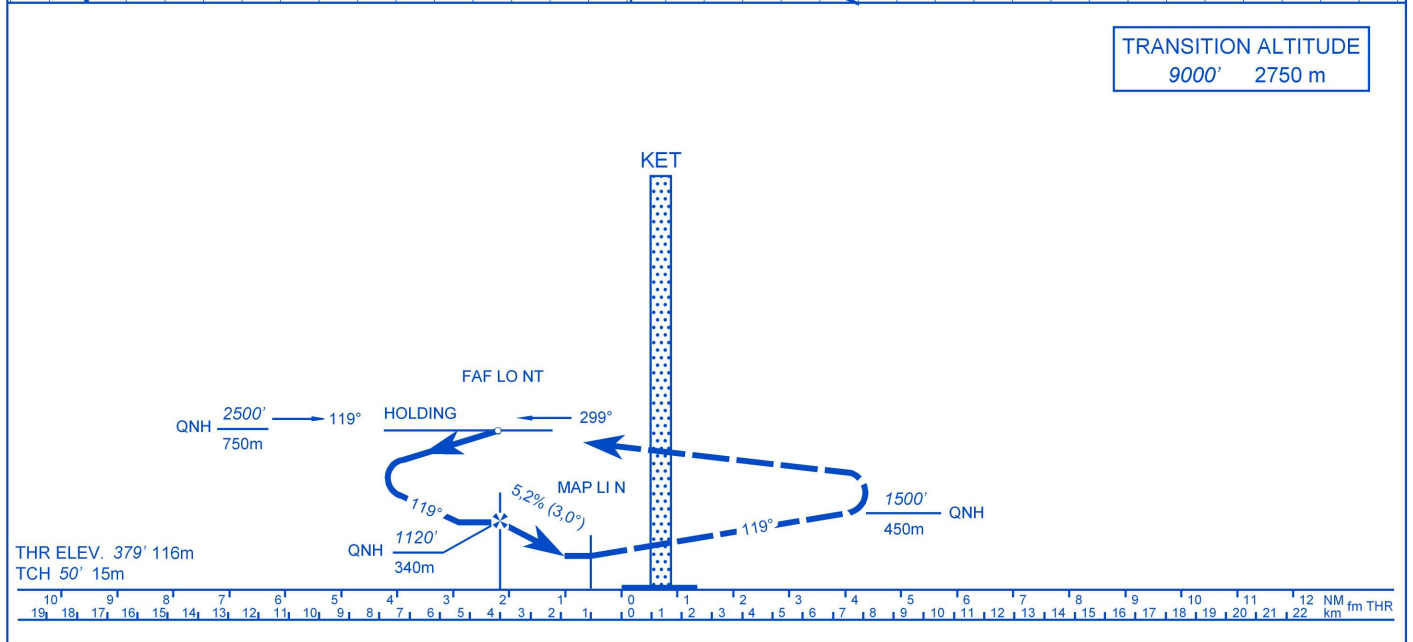


TRANSITION ALTITUDE
9000' 2750 m



LHKE - NDB 12 (H,A)

Approach from NDB holding:

Initial altitude: 2500' (750m) QNH.

When cleared for the approach begin descent to 1120' (340m) QNH on outbound leg to FAF. Over FAF (NT) begin descent at a rate of 5.2% (3°). Extended RWY centerline magnetic course 119°.

Missed approach:

Fly RWY heading climb to 2500' (750m) QNH. Crossing 1500' (450m) QNH turn left inbound NT LO. No turns before DER!

Holding procedure:

Holding fix: NT LO
Right hand holding pattern.
Maximum speed: 90 KIAS
Inbound track: 119° MAG
Outbound track: 299° MAG
Rate of turn: 3°/sec. or 25° bank angle
(whichever requires lesser bank)
Outbound timing: 1 min.
Minimum holding altitude: 2500' (750m) QNH

Final approach descent: 5,2% (3,0°)

MDA-VIS MDH (Ceil-VIS)	H	A
NDB 12	920' 1.2 540'	(600'-1.2)
CIRCLING	1000' 1.2 630'	(700'-1.2)

Note: When ALS inoperative increase visibility with 0.4 km.