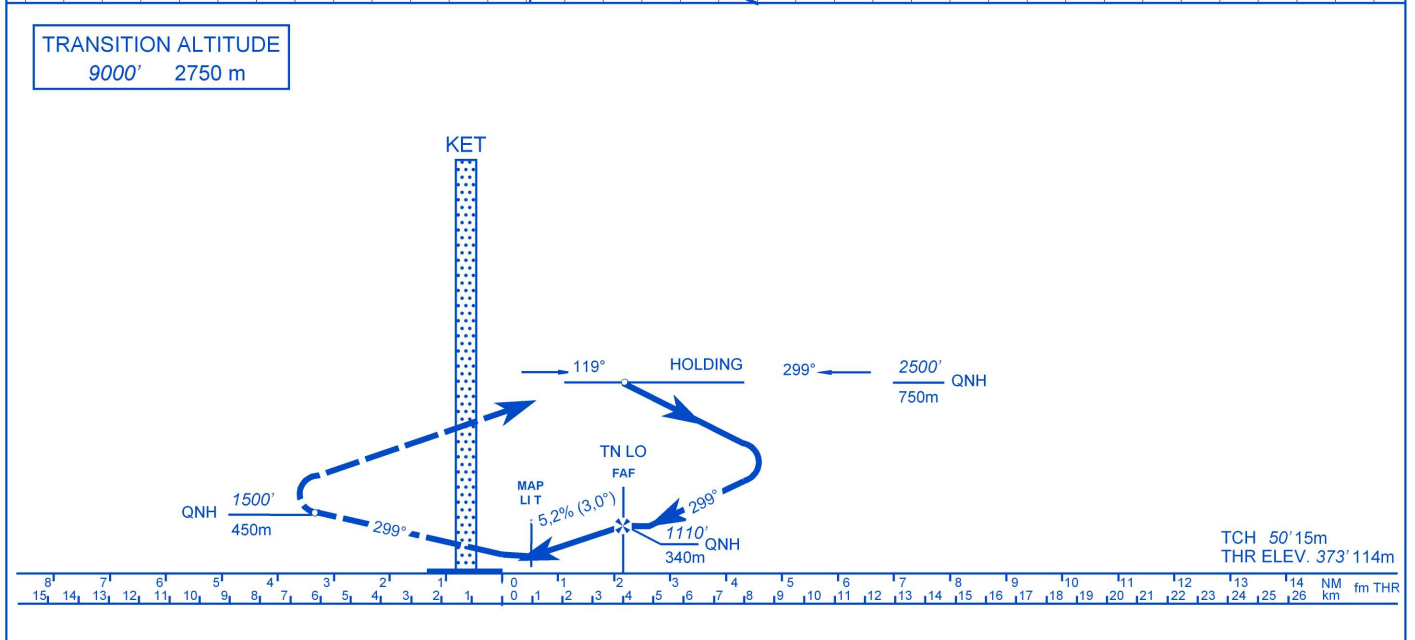


TRANSITION ALTITUDE
 9000' 2750 m



LHKE - NDB 30 (H,A)

Approach from NDB holding:

Initial altitude: 2500' (750m) QNH.

When cleared for the approach begin descent to 1110' (340m) QNH on outbound leg. Over FAF (TN) begin descent at a rate of 5.2% (3°). Extended RWY centerline magnetic course 299°.

Missed approach:

Fly RWY heading climb to 2500' (750m) QNH. Crossing 1500' turn right inbound TN LO. No turns before DER!

Holding procedure:

Holding fix: TN LO
Right hand holding pattern.
Maximum speed: 90 KIAS
Inbound track: 299° MAG
Outbound track: 119° MAG
Rate of turn: 3°/sec. or 25° bank angle
(whichever requires lesser bank)
Outbound leg limit: 1 minute
Minimum holding altitude: 2500' (750m) QNH

Final approach descent: 5,2% (3,0°)

MDA-VIS MDH (Ceil-VIS)	A	H
NDB 30	850' 1.2	480' (550'-1.2)
CIRCLING	1000' 1.2	630' (700'-1.2)

Note: When ALS inoperative increase visibility with 0.4km.