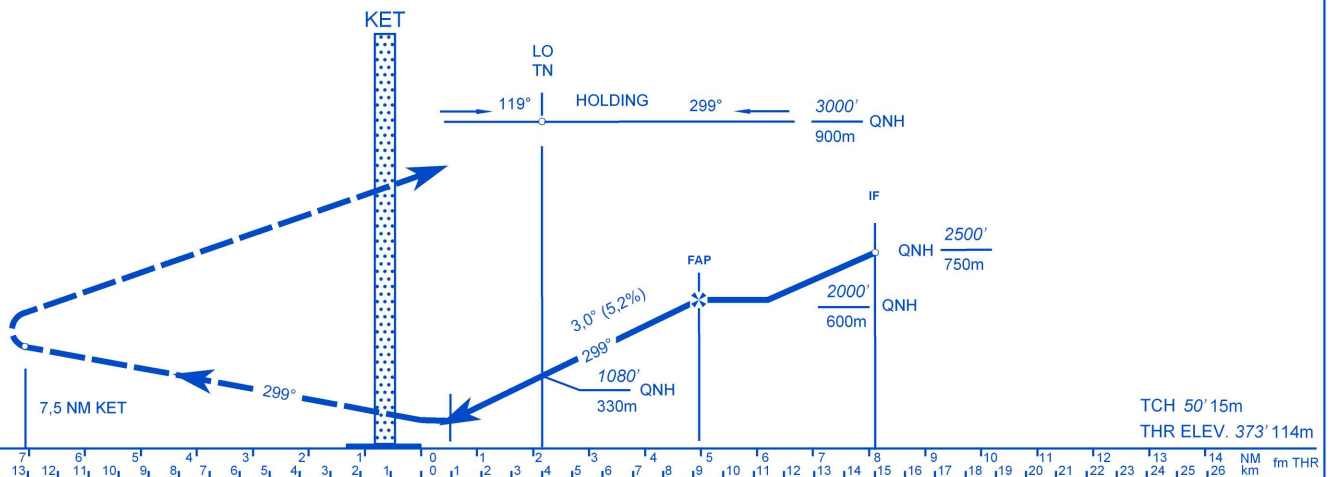


TRANSITION ALTITUDE
9000' 2750 m



LHKE - PAR 30

Approach from NDB holding:

Initial altitude: 3000' (900m) QNH.

Expect radar vectors to IF. IF 8.1 NM from THR altitude 2500' (750m) QNH. Follow ATC instructions.

Note: If A/C is left of course by more than 0.5 NM passing TN LO ATC initiates missed approach procedure due to safety.

Missed approach:

Fly RWY heading climb to 3000' (900m) QNH. Crossing 2500' (750m) QNH turn left inbound TN LO enter the holding. No turns before DER!

Holding procedure:

Holding fix: TN LO
 Right hand holding pattern.
 Maximum speed: 210 KIAS
 Inbound track: 299° MAG
 Outbound track: 119° MAG
 Rate of turn: 3°/sec. or 25° bank angle
 (whichever requires lesser bank)
 Outbound leg limit: 1 minute
 Minimum holding altitude: 3000' (900m) QNH

Final approach descent: 3,0° (5,2%)

DA-VIS DH (Ceil-VIS)	A	B	C	D	
PAR 30	570-1.2 200 (300-1.2)				
CIRCLING	MDA-VIS MDH (Ceil-VIS)	1000' 1.2 630' (700'-1.2)	1010' 2.0 640' (700'-1.2)	1220' 3.6 840' (900'-3.6)	1230' 4.0 850' (950'-4.0)

Note: When ALS inoperativ increase visibility with 0.4 km.