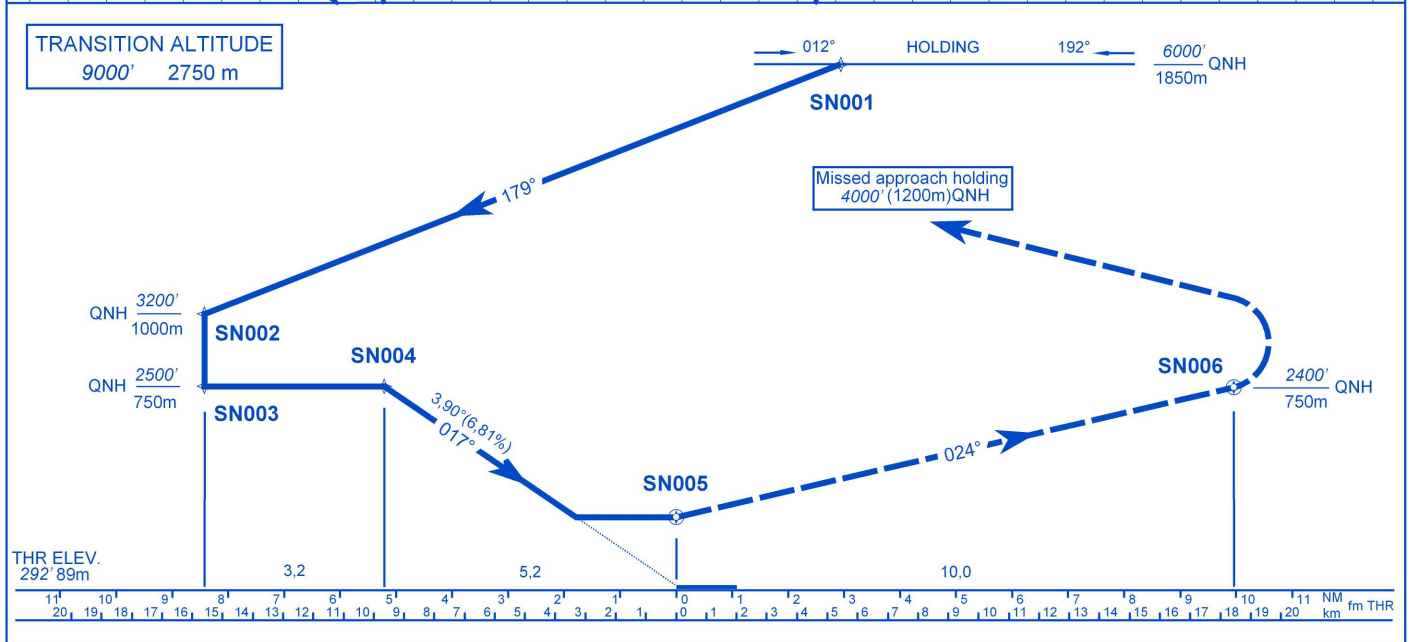


TRANSITION ALTITUDE
 9000' 2750 m



LHSN - RNAV (GNSS) 02 (A,B,C)

Only aircraft, equipment and aircrew **approved by the State of the Operator** to carry out GNSS approaches, may use the procedure.

Procedure speed: 160 KIAS max.

Missed approach:

Climb with 7° right offset towards SN006. Climbing to 4000' (1200m) QNH. Reach 2400' (750m) QNH by SN006 fly-over waypoint and turn left direct SN001. Enter holding at 4000' (1200m) QNH.

Holding procedure:

Holding fix: SN001
 Right hand holding pattern.
 Maximum speed: 210 KIAS
 Inbound track: 192° MAG
 Outbound track: 012° MAG
 Rate of turn: 3°/sec. or 25° bank angle
 (whichever requires lesser bank)
 Outbound distance: 4 NM
 Minimum holding altitude: 6000' (1850m) QNH
 4000' (1200m) QNH for Missed Approach

Final approach descent: 3,90° (6,81%)

WAY-POINT COORDINATES

WP	LATITUDE	LONGITUDE	DEFINITIONS
SN001	N 470935,62	E 0201524,39	IAWP/MAHWP
SN002	N 465734,65	E 0201443,92	IAWP
SN003	N 465900,88	E 0200921,43	IWP
SN004	N 470200,33	E 0201103,78	FAWP
SN005	N 470651,71	E 0201350,41	MAWP
SN006	N 471526,34	E 0202038,79	MATWP

OCA (OCH)		A	B	C	D	DISTANCE	60 kt 111 km/h	90 kt 167 km/h	120 kt 222 km/h	150 kt 278 km/h	180 kt 333 km/h
STRAIGHT-IN APPROACH	ft	810 (518)		1090 (798)	NOT AUTHORIZED	FAF - MAPt (A) 5,22 NM 9,66 km MIN:s	5:13	3:28	2:37	2:05	NOT APPL.
	m	245 (156)		330 (241)							
CIRCLING	ft/m MSL	870/265	870/265	1070/325							
	VIS m	1900	2800	3700							