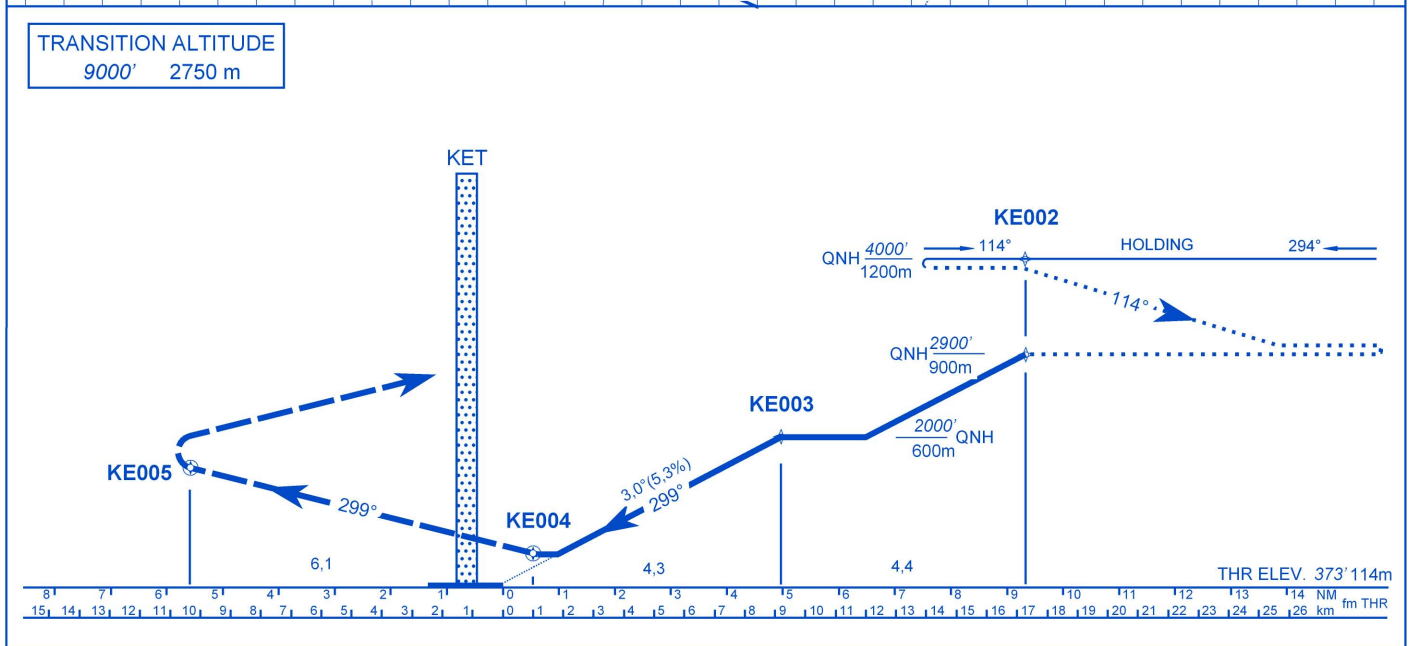


TRANSITION ALTITUDE
 9000' 2750 m



LHKE - RNAV (GNSS) 30

Only aircraft, equipment and aircrew **approved by the State of the Operator** to carry out GNSS approaches, may use the procedure.

Procedure entry at KE001 and KE002 transitioning from STARs at ATC discretion only.

Missed approach:

Climb straight ahead. Climbing to 4000' (1200m) QNH. At KE005 fly-over waypoint turn left direct KE002 and enter holding at 4000' (1200m) QNH.

Holding procedure:

Holding fix: KE002
 Right hand holding pattern.
 Maximum speed: 230 KIAS
 Inbound track: 294° MAG
 Outbound track: 114° MAG
 Rate of turn: 3°/sec. or 25° bank angle
 (whichever requires lesser bank)
 Outbound distance: 4 NM
 Minimum holding altitude: 4000' (1200m) QNH

Final approach descent: 3,00° (5,24%)

WAY-POINT COORDINATES

WP	LATITUDE	LONGITUDE	DEFINITIONS
KE001	N 464544,26	E 0195554,42	IAWP
KE002	N 464938,15	E 0195712,22	IAWP/IWP/MAHWP
KE003	N 465200,15	E 0195151,60	FAWP
KE004	N 465421,09	E 0194632,35	MAWP
KE005	N 465739,11	E 0193902,07	MATWP

OCA (OCH)		A	B	C	D	DISTANCE	60 kt	90 kt	120 kt	150 kt	180 kt
STRAIGHT-IN APPROACH	ft	740(367)					FAF - MAPt 4,34 NM 8,04 km MIN:s	111 km/h	167 km/h	222 km/h	278 km/h
	m	225(111)				Timing not authorized to define the MAPt.					
CIRCLING	ft/m MSL	870/265	870/265	1070/325	1070/325						
	VIS m	1900	2800	3700	4600						