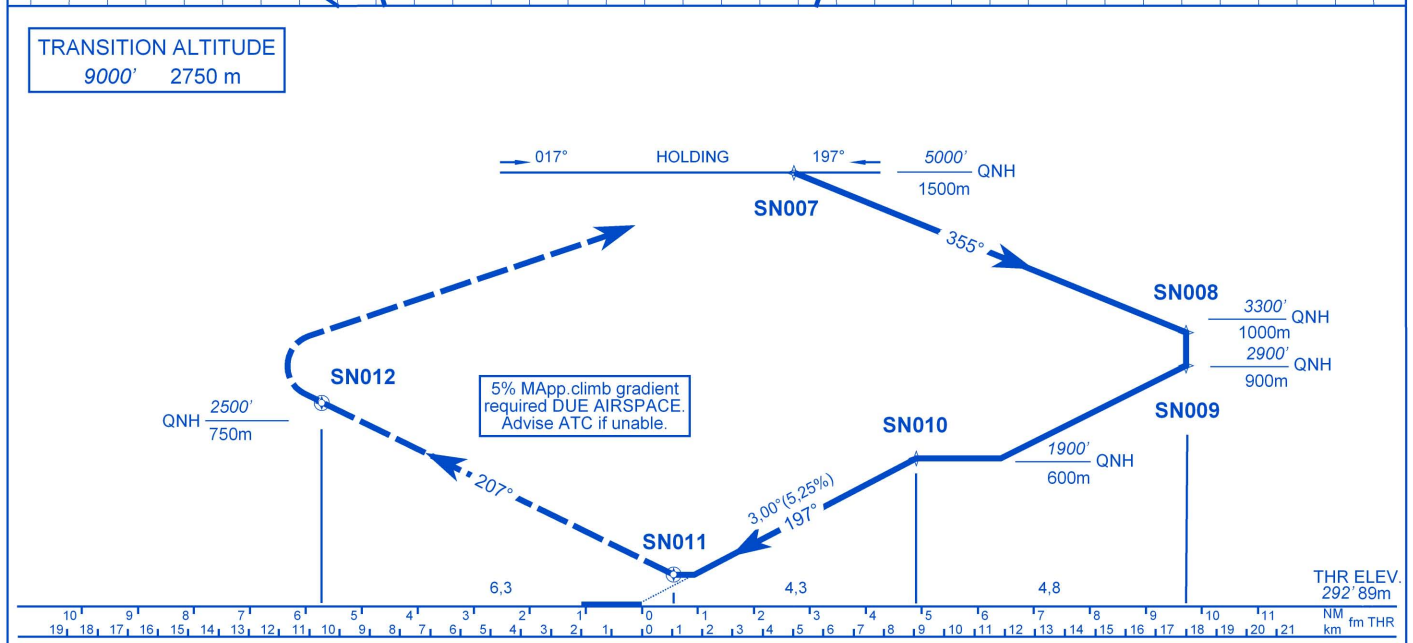


TRANSITION ALTITUDE
9000' 2750 m



LHSN - RNAV (GNSS) 20 (A,B,C)

Only aircraft, equipment and aircrew **approved by the State of the Operator** to carry out GNSS approaches, may use the procedure.

Procedure speed: 160 KIAS max.

Missed approach:

Climb with 10° right offset towards SN012. Climbing to 5000' (1500m) QNH. Reach 2500' (750m) QNH by SN012 fly-over waypoint and turn left direct SN007. Enter holding at 5000' (1500m) QNH.

Holding procedure:

Holding fix: SN007
 Right hand holding pattern.
 Maximum speed: 210 KIAS
 Inbound track: 017° MAG
 Outbound track: 197° MAG
 Rate of turn: 3°/sec. or 25° bank angle
 (whichever requires lesser bank)
 Outbound distance: 4 NM
 Minimum holding altitude: 5000' (1500m) QNH

Final approach descent: 3,00° (5,24%)

WAY-POINT COORDINATES

WP	LATITUDE	LONGITUDE	DEFINITIONS
SN007	N 471023,68	E 0201551,98	IAWP/MAHWP
SN008	N 471800,20	E 0201530,70	IAWP
SN009	N 471654,54	E 0201936,90	IWP
SN010	N 471225,42	E 0201701,93	FAWP
SN011	N 470823,55	E 0201443,05	MAWP
SN012	N 470258,16	E 0201004,91	MATWP

OCA (OCH)		A	B	C	D	DISTANCE	60 kt	90 kt	120 kt	150 kt	180 kt	
STRAIGHT-IN APPROACH MA. climb 5%	ft	640 (348)			NOT AUTHORIZED			111 km/h	167 km/h	222 km/h	278 km/h	333 km/h
	m	195 (106)										
STRAIGHT-IN APPROACH MA. climb 2,5%	ft	1550 (1258)				FAF - MAPt 4,33 NM 8,02 km MIN:s	Timing not authorized to define the MAPt.					NOT APPL.
	m	450 (361)										
CIRCLING	ft/m	870/265	870/265	1070/325								
	VIS m	1900	2800	3700								