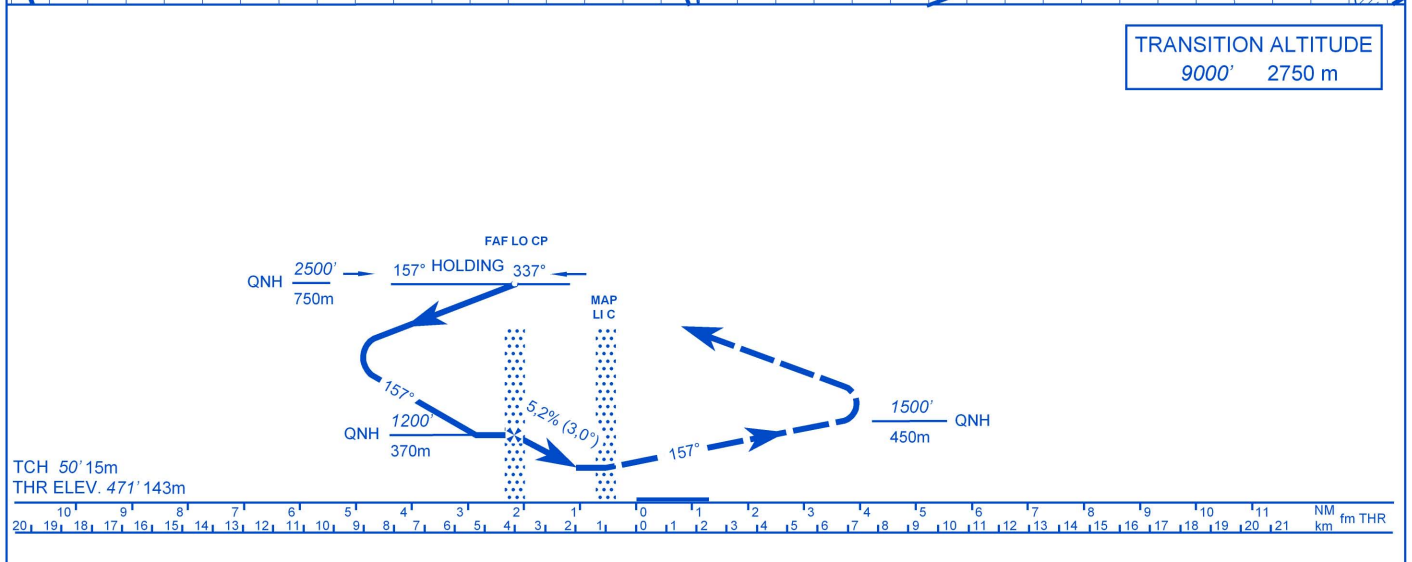


TRANSITION ALTITUDE
9000' 2750 m



LHPA - NDB 16 (H, A)

Approach from NDB holding:

Initial altitude: 2500' (750m) QNH.

When cleared for the approach begin descent to 1200' (370m) QNH on outbound leg.

Over FAF (CP) begin descent at a rate of 5.2%(3°). Extended RWY centerline magnetic course 157°.

Missed approach:

Fly RWY heading climb to 2500' (750m) QNH. After crossing 1500' (450m) QNH turn right inbound CP LO enter the holding at 2500' (750m) QNH. (No turns before DER)!

Holding procedure:

Holding fix: CP LO

Right hand holding pattern.

Maximum speed: 90 KIAS

Inbound track: 157° MAG

Outbound track: 337° MAG

Rate of turn: 3°/sec. or 25° bank angle
(whichever requires lesser bank)

Outbound leg limit: 1 minute

Minimum holding altitude: 2500' (750m) QNH

Final approach descent: 5,2% (3,0°)

MDA-VIS MDH (Ceil-VIS)	H	A
NDB 16 H/A	950-1.2 480 (550-1.2)	950-1.2 480 (550-1.2)
CIRCLING	1110-1.2 640 (700-1.2)	1110-1.2 640 (700-1.2)

Note: When ALS inoperative increase visibility with 0.4 kms.