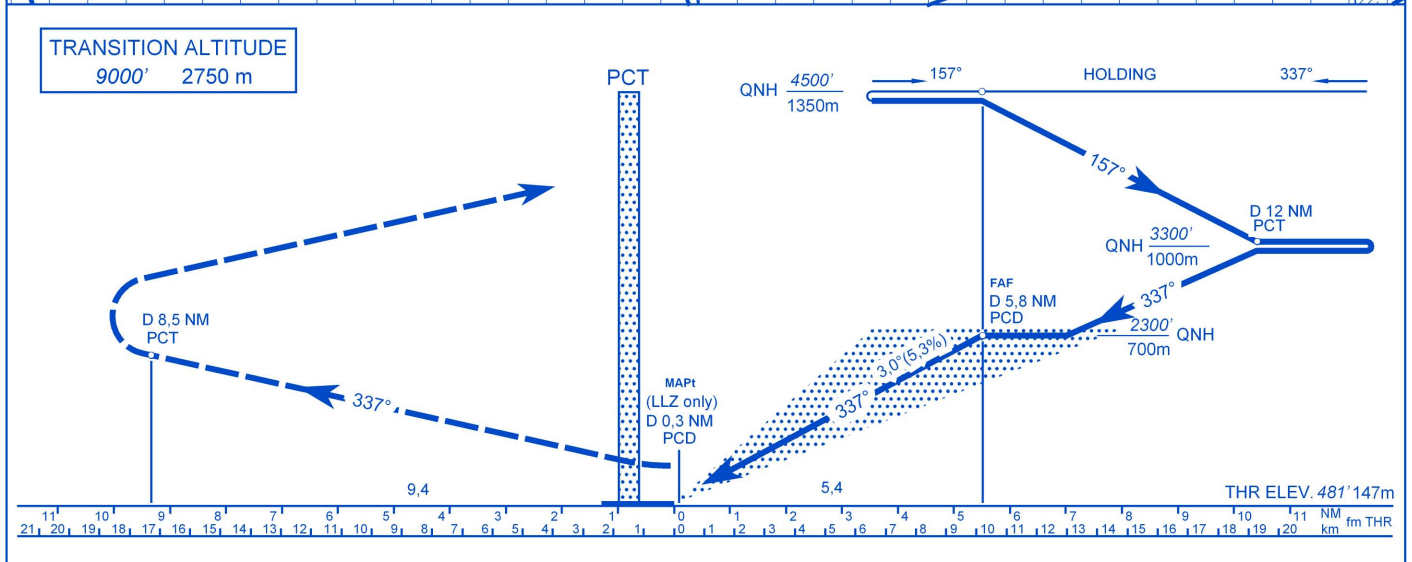


**TRANSITION ALTITUDE**  
9000' 2750 m



# LHPA - ILS 34

## Approach from VOR/DME holding:

Initial altitude: 4500' (1350m) QNH.

At D 6,4 NM PCT DME (holding fix) turn right to 157° and descend to 3300' (1000m) QNH. At D 12 NM PCT DME turn right and intercept PCD 337° localizer inbound.

Proceed to FAF descending to 2300' (700m) QNH. At D 5,8 NM PCD DME start the final descent and follow ILS.

## Missed approach:

Climb straight ahead. Climbing to 4500' (1350m) QNH. At D 8,5 NM PCT DME turn left inbound PCT VOR.

## Holding procedure:

Holding fix: D 6,4 NM on R157 PCT VOR/DME

Right hand holding pattern.

Maximum speed: 230 KIAS

Inbound track: 337° MAG

Outbound track: 157° MAG

Rate of turn: 3°/sec. or 25° bank angle  
(whichever requires lesser bank)

Outbound leg limit: D 12 NM PCT DME

Minimum holding altitude: 4500' (1350m) QNH

Final approach descent: 3,00° (5,24%)

OCA (OCH)		A	B	C	D	DISTANCE	60 kt	90 kt	120 kt	150 kt	180 kt							
STRAIGHT-IN APPROACH	Cat. I. Press. altim.	ft	681 (200)	681 (200)	681 (200)	681 (200)	FAF - MAPt 5,43 NM 10,06 km	111 km/h	167 km/h	222 km/h	278 km/h	333 km/h						
		m	208 (61)	208 (61)	208 (61)	208 (61)												
	GP INOP.	ft	870 (389)										min : sec	5:26	3:37	2:43	2:10	1:49
		m	265 (118)															
CIRCLING	ft/m MSL	940/285	1010/305	1200/365	1200/365	feet / min	326	489	652	817	974							
	vis m	1900	2800	3700	4600	m / sec	1,7	2,5	3,3	4,1	4,9							