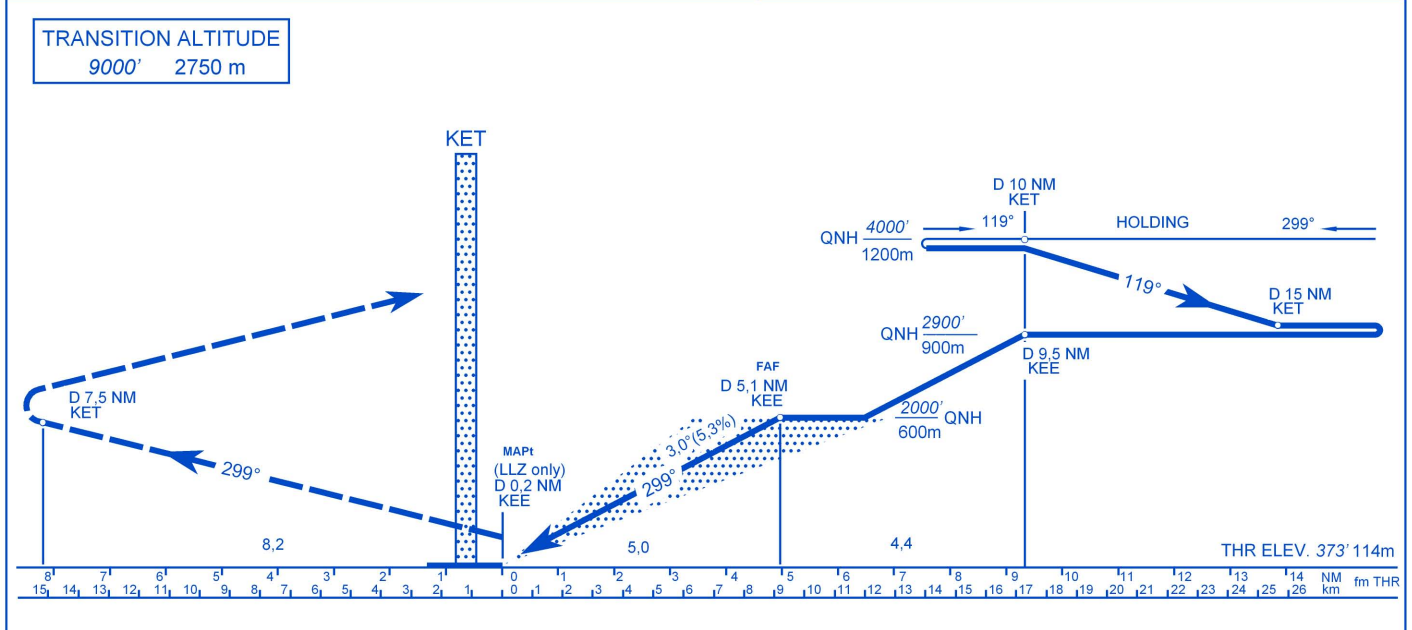


TRANSITION ALTITUDE
9000' 2750 m



LHKE - ILS 30

Approach from VOR/DME holding:

Initial altitude: 4000' (1200m) QNH.

At D 10 NM KET DME (holding fix) turn right to 119° and descend to 2900' (900m) QNH.

At D 15 NM KET DME turn right and intercept KEE 299 localizer. Proceed to IF at 2900' (900m) QNH. At D 9,5 NM KEE DME proceed to FAF descending to 2000' (600m) QNH.

At D 5,1 NM KEE DME start the final descent and follow ILS.

Missed approach:

Climb straight ahead. Climbing to 4000' (1200m) QNH. At D 7,5 NM KET DME turn left inbound KET VOR.

Holding procedure:

Holding fix: D 10 NM on R299 KET VOR/DME

Right hand holding pattern.

Maximum speed: 230 KIAS

Inbound track: 299° MAG

Outbound track: 119° MAG

Rate of turn: 3°/sec. or 25° bank angle
(whichever requires lesser bank)

Outbound leg limit: D 15 NM KET DME

Minimum holding altitude: 4000' (1200m) QNH

Final approach descent: 3,00° (5,24%)

OCA (OCH)		A	B	C	D	DISTANCE	60 kt	90 kt	120 kt	150 kt	180 kt	
STRAIGHT-IN APPROACH	Cat. I.	ft	573(200)	573(200)	573(200)	573(200)	FAF - MAPt 4,96 NM 9,18 km	111 km/h	167 km/h	222 km/h	278 km/h	333 km/h
	Press. altim.	m	175(61)	175(61)	170(56)	175(61)						
	LLZ only	ft	730(357)									
	m	220(106)										
CIRCLING	ft/m MSL	870/265	870/265	1070/325	1070/325	feet / min	318	478	634	796	957	
	vis m	1900	2800	3700	4600	m / sec	1,6	2,4	3,2	4,0	4,9	