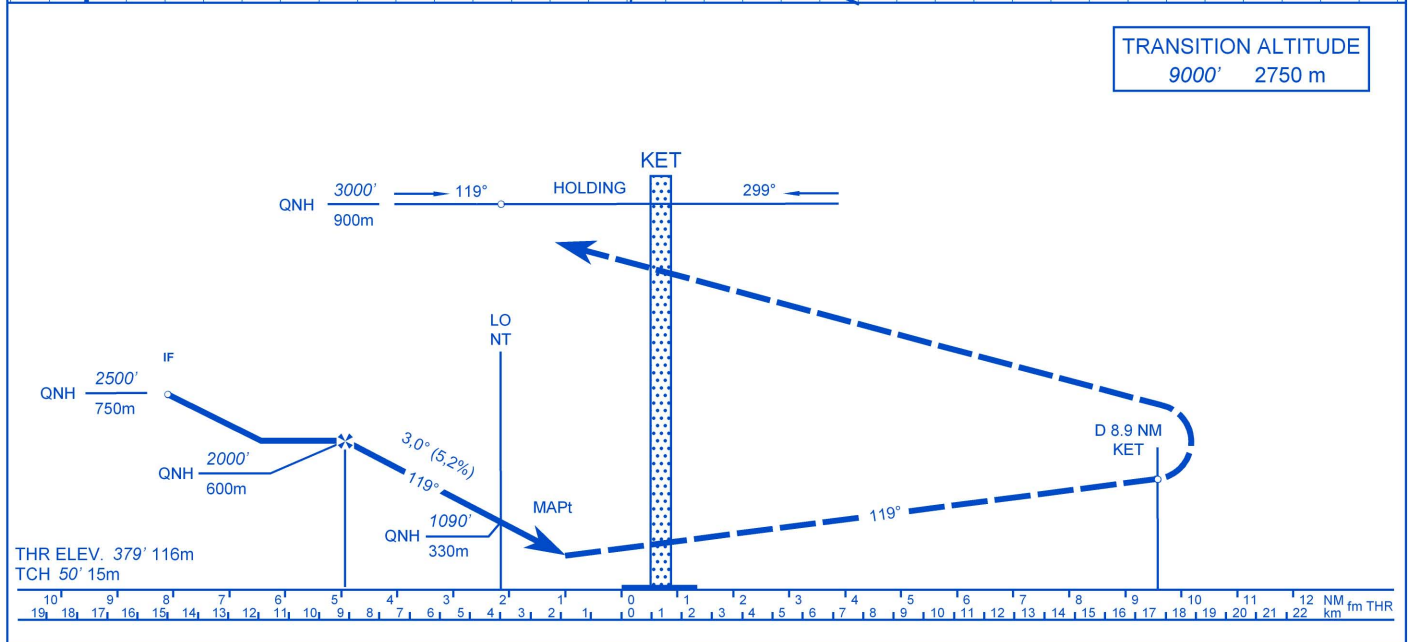


TRANSITION ALTITUDE
9000' 2750 m



LHKE - PAR 12

Approach from NDB holding:

Initial altitude: 3000' (900m) QNH.

Expect radar vectors to IF. IF altitude 2500' (750m) QNH 8.1 NM from THR. Follow ATC instructions.

Missed approach:

Cross departure end of RWY at or below 1500'. Fly RWY heading climb to 3000' (900m) QNH. Crossing 2000' (600m) QNH turn right to NT LO enter the holding.

Holding procedure:

Holding fix: NT LO
 Right hand holding pattern.
 Maximum speed: 210 KIAS
 Inbound track: 291° MAG
 Outbound track: 119° MAG
 Rate of turn: 3°/sec. or 25° bank angle
 (whichever requires lesser bank)
 Outbound timing: 1 min.
 Minimum holding altitude: 3000' (900m) QNH

Final approach descent: 3,0° (5,2%)

DA-VIS DH (Ceil-VIS)	A	B	C	D
PAR 12	670' 1.2 300' (350'-1.2)		690' 1.2 310' (400'-1.2)	
CIRCLING MDA VIS MDH (Ceil-VIS)	1000' 1.2 620' (700'-1.2)	1010' 1.2 630' (700'-1.2)	1220' 3.6 840' (900'-3.6)	1230' 4.0 850' (950'-4.0)

Note: When ALS inoperative increase visibility with 0.4 km.