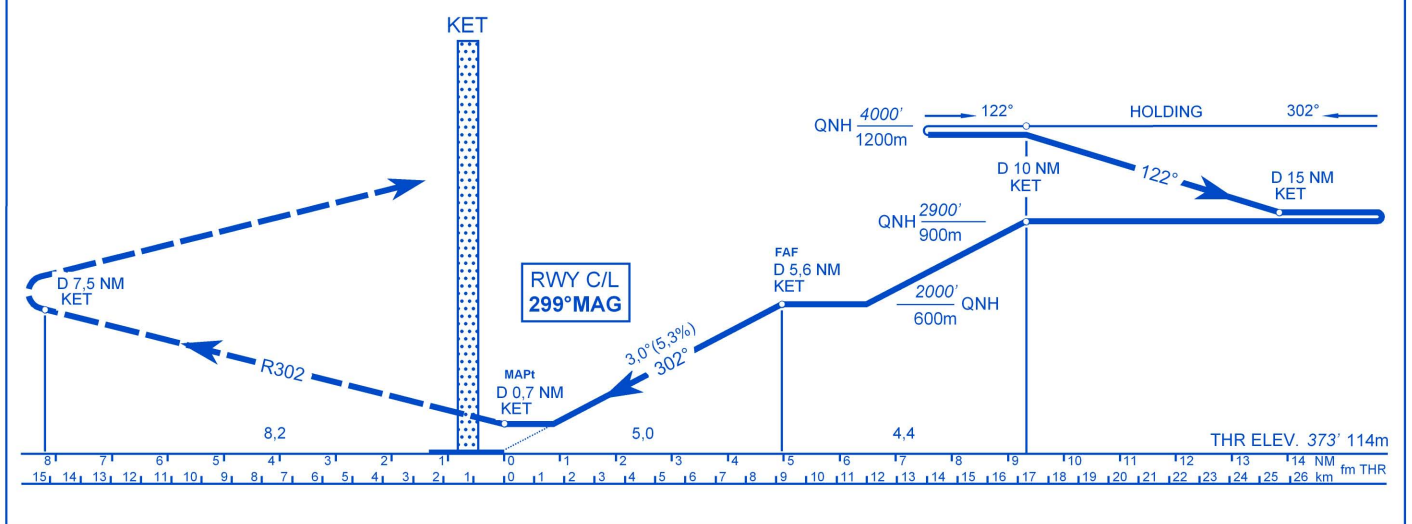


TRANSITION ALTITUDE
 9000' 2750 m



LHKE - VOR 30

Approach from VOR/DME holding:

Initial altitude: 4000' (1200m) QNH.

At D 10 NM KET DME (holding fix) turn right to 122° and descend to 2900' (900m) QNH.

At D 15 NM KET DME turn right and intercept R122 inbound KET VOR. Proceed to IF at

2900' (900m) QNH. At D 10 NM KET DME proceed to FAF descending to 2000' (600m)

QNH. At 5,6 NM KET DME descend to 730' (220m) QNH on R122 inbound KET VOR.

RWY centerline is 299° MAG.

Missed approach:

Climb straight ahead. Climbing to 4000' (1200m) QNH. At D 7,5 NM KET DME turn left inbound KET VOR.

Holding procedure:

Holding fix: D 10 NM on R122 KET VOR/DME

Right hand holding pattern.

Maximum speed: 220 KIAS

Inbound track: 302° MAG

Outbound track: 122° MAG

Rate of turn: 3°/sec. or 25° bank angle
(whichever requires lesser bank)

Outbound leg limit: D 15 NM KET DME

Minimum holding altitude: 4000' (1200m) QNH

Final approach descent: 3,00° (5,24%)

OCA (OCH)		A	B	C	D	DISTANCE	60 kt	90 kt	120 kt	150 kt	180 kt
STRAIGHT-IN APPROACH	ft	730(357)					FAF - MAPt 4,96 NM 9,18 km	111 km/h	167 km/h	222 km/h	278 km/h
		m	220(106)								
CIRCLING	ft/m MSL	870/265	870/265	1070/325	1070/325		4:58	3:18	2:29	1:59	1:39
	VIS m	1900	2800	3700	4600	MIN:s					